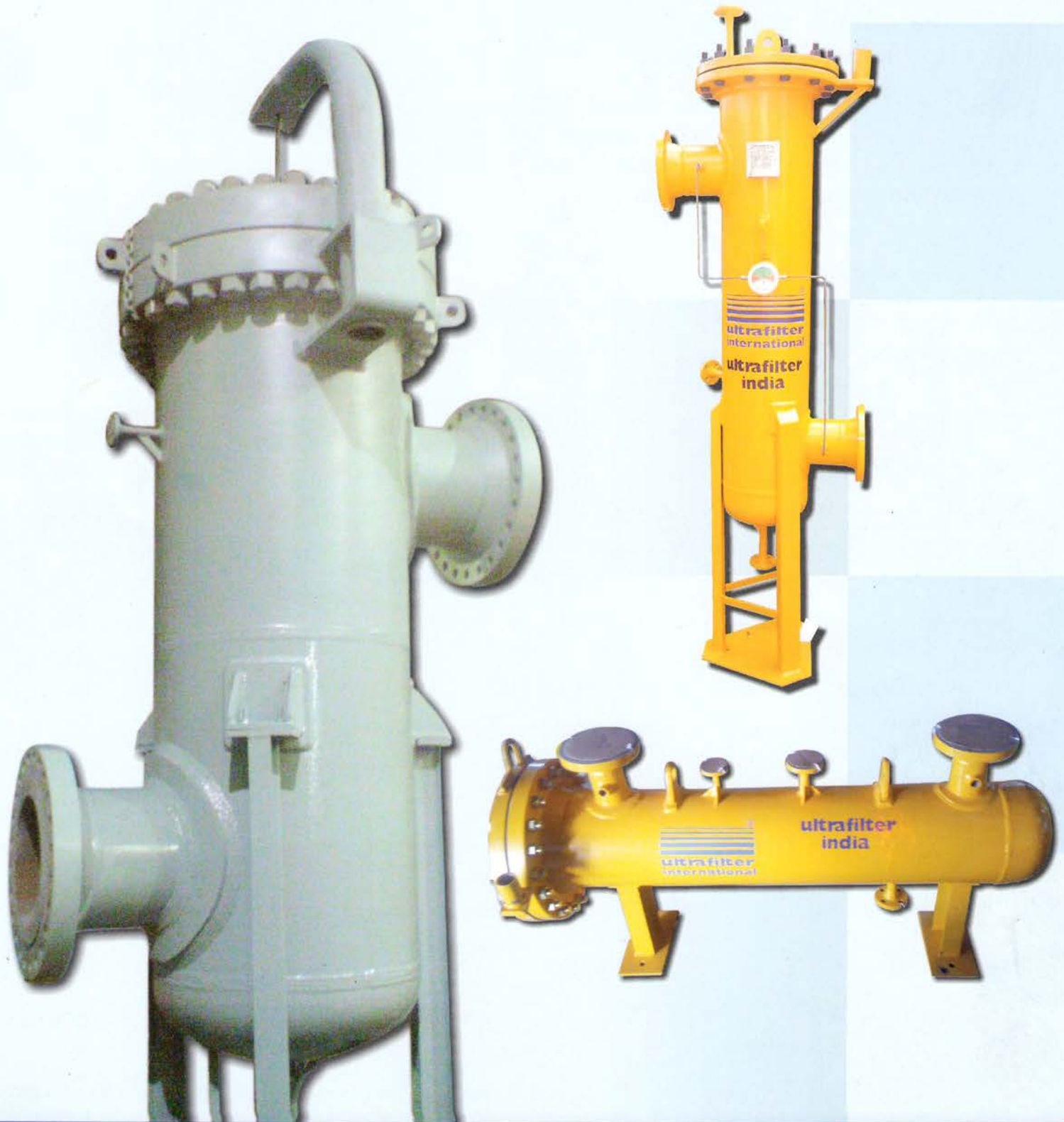




ultrafilter (india) pvt. ltd.

(An ISO 9001:2000 Certified Company)



Natural Gas Filters

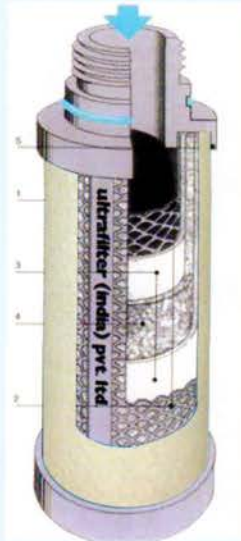
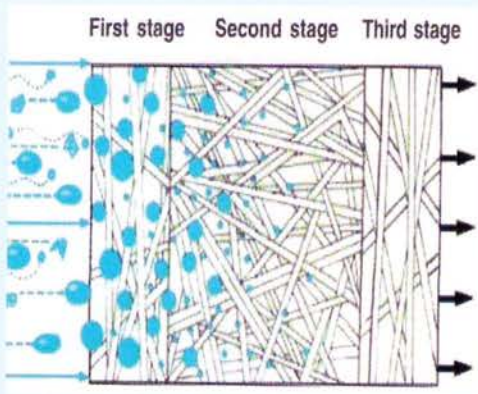
"ultrafilter (india) pvt ltd. .. Pure & Worldwide"

ultrafilter (india) Pure & Worldwide

Application

Compressed Natural Gas is becoming extremely popular as alternative fuel for automobiles. There are a few major players who have set up natural gas exploration plants to meet the increasing demand for CNG. It is equally important to have good quality natural gas in order to protect the engine from corrosion and malfunctioning. **ultrafilter (india)** provides the right solution for removal of dust, water and oil particles from natural gas stream.

ultrafilter (india) make FF/MF/SMF elements are suitable for these application. The filter elements are made of three layer borosilicate fiber glass with an external nomex sock provides high efficiency filtration >99%. Cross section view of the filter element is shown below:



Special Features:

- Flow rates upto 1,00,000 scmh; Operating pressure upto 49 kg/cm²; Design pressure upto 99 kg/cm² (600# rating)
- Filtration down to 1 micron and >99% efficiency using Sintered SS 316 L elements for particle filtration
- Filtration down to 0.01 micron and >99% efficiency using FF/MF/SMF elements for particle, oil/water aerosol filtration
- Filter media is chemically & biologically inert
- Filter elements are available in different sizes from 5" to 30" length



- Filter housings with single elements as well as multiple elements
- Filter housings are designed as per ASME codes.
- Top cover with Davit Arm. Quick opening closure (QOC) can also be provided upon request
- Stainless Steel inner and outer support sleeves for the filter elements give additional strength
- Support sleeves with large open area and hence negligible pressure drop
- Additional features can be provided as per customer's specifications

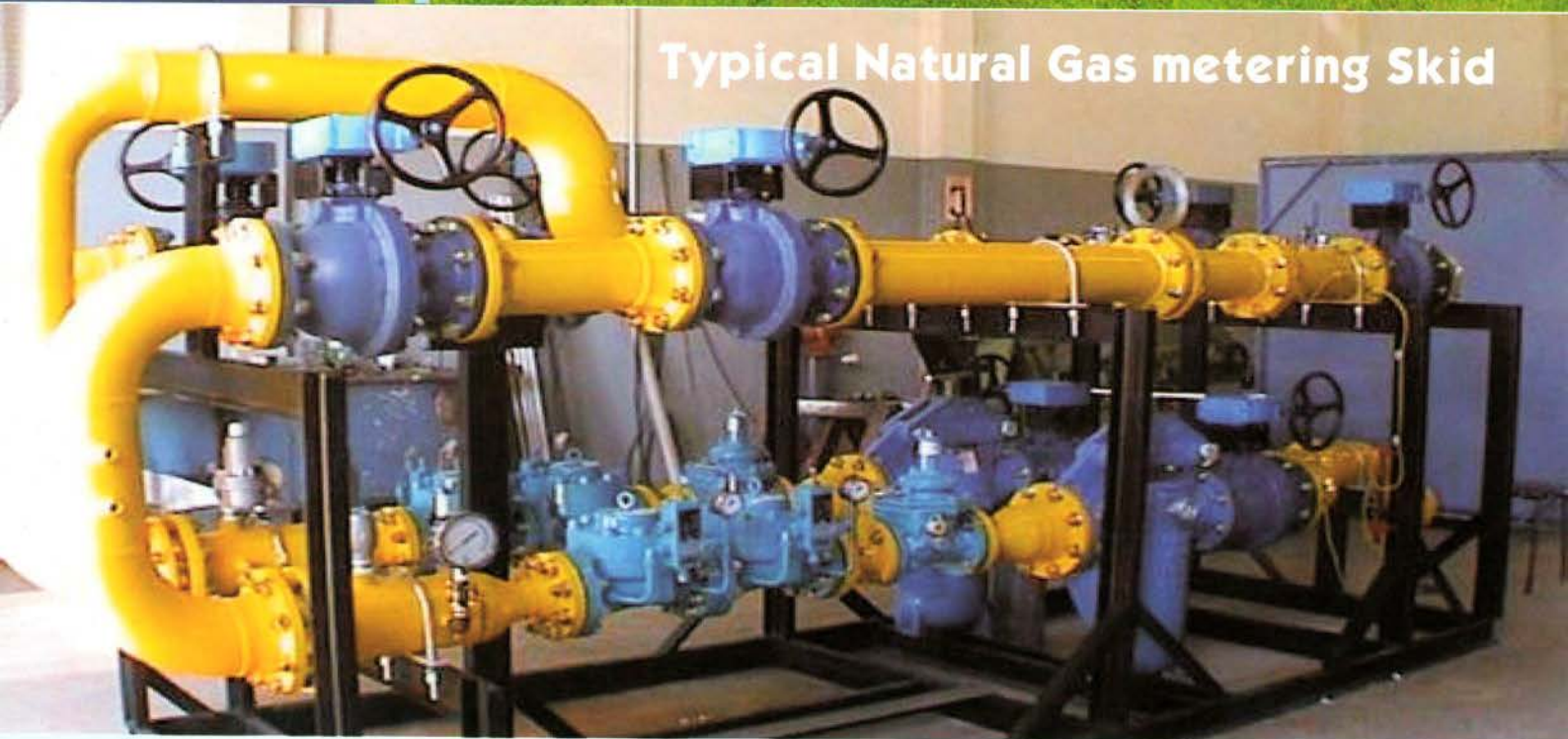
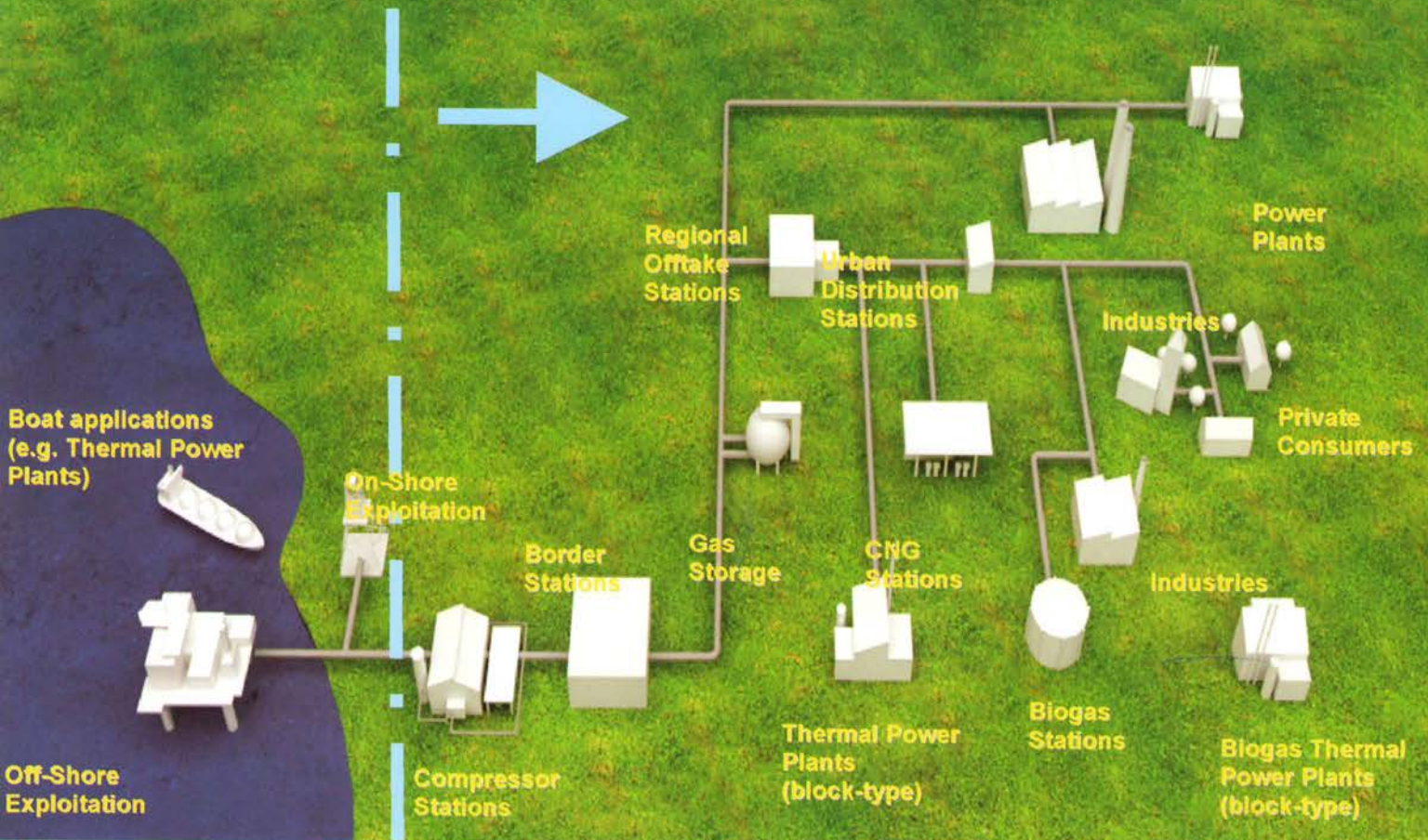
ULTRAFILTER NATURAL GAS FILTER MODELS

Model Type	Flow Rate (SCMH)	Type of Filter Elements	No. of Filter Elements	Nozzle Size	Cylinder Size required
C SG 5-1 5/25X1 FF	300	5/25	1	1	5
C SG 6-1.5 10/30X1 FF	700	10/30	1	1.5	6
C SG 6-2 15/30X1 FF	1150	15/30	1	2	6
C SG 6-2.5 20/30X1 FF	1650	20/30	1	2.5	6
C SG 6-3 30/30X1 FF	2550	30/30	1	3	6
C SG 8-4 10/30X2 FF	1700	10/30	2	4	8
C SG 8-4 20/30X2 FF	3400	20/30	2	4	8
C SG 8-4 30/30X2 FF	4400	30/30	2	4	8
C SG 12-6 10/30X5 FF	4250	10/30	5	6	12
C SG 12-6 10/30X5 FF	8500	20/30	5	6	12
C SG 12-6 30/30X4 FF	10000	30/30	4	6	12
C SG 16-8 10/30X9 FF	7650	10/30	9	8	16
C SG 16-8 20/30X9 FF	15300	20/30	9	8	16
C SG 16-8 30/30X8 FF	18000	30/30	8	8	16
C SG 20-10 10/30X13 FF	11050	10/30	13	10	20
C SG 20-10 20/30X13 FF	22100	20/30	13	10	20
C SG 20-10 30/30X12FF	28500	30/30	12	10	20
C SG 24-12 10/30X19 FF	16150	10/30	19	12	24
C SG 24-12 20/30X19 FF	32300	20/30	19	12	24
C SG 24-12 30/30X16 FF	40800	30/30	16	12	24
C SG 28-14 10/30X31 FF	26350	10/30	31	14	28
C SG 28-14 20/30X29 FF	49300	20/30	29	14	28
C SG 32-16 10/30X38 FF	32300	10/30	38	16	32
C SG 32-16 20/30X38 FF	64600	20/30	38	16	32

Design Conditions

Operating Pressure (Po)	8 bar (a)
Operating Temperature (To)	40°C
Design Pressure	16 bar (a)
Design Temperature	60°C
Velocity	<20m/s
Pressure drop per element in clean condition	0.05 bar FF(HTNX)
Quantity correction factor for pressure	Multiply by (P/8)
Temperature correction factor for quantity	Multiply by (313/(273+To))

Natural Gas Infrastructure



Typical Natural Gas metering Skid



ultrafilter (india) pvt. ltd.

Plot No. 70, Bommasandra Indl. Area, Bangalore - 560 099.
 Phone: +91-80-2783 2051/2783 2491
 Fax: +91-80-2783 2470
 E-mail: info@ultrafilterindia.com
 Website : www.ultrafilterindia.com

ultrafilter (india) sales network

- Bangalore
- Chennai
- Delhi
- Mumbai
- Pune
- Secunderabad
- Kolkatta
- Indonesia
- Srilanka
- Bangladesh
- Nepal
- Vietnam
- Indonesia

Authorised Representative